

# Paramedic Community of Practice

Collaboration and communication with local teams



**Facilitator:** Stuart Woolley

**Date:** November 4<sup>th</sup>, 2022

**Panelists:** Dr. David Henderson,  
Lisa Weatherbee, RN  
Dr. Jitin Sondhi,  
Kristina Anton, Paramedic  
Karen O'Brien, Paramedic  
Alana Corkery

# Territorial Honouring

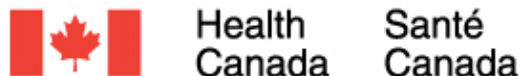


# The Palliative Care ECHO Project

The Palliative Care ECHO Project is a 5-year national initiative to cultivate communities of practice and establish continuous professional development among health care providers across Canada who care for patients with life-limiting illness.

**Stay connected: [www.echopalliative.com](http://www.echopalliative.com)**

The Palliative Care ECHO Project is supported by a financial contribution from Health Canada. The views expressed herein do not necessarily represent the views of Health Canada.



# Introductions

## Facilitator:

**Stuart Woolley FdSci, DipHE, PGCert, MCPara, ACP**  
Paramedic since 2003 in UK & Canada, current Paramedic Practice Leader in BCEHS leading Palliative Care, Low Acuity Patient Management & Paramedic Specialist support. Interim PPL for the Fraser Valley.

## Panelists:

**Dr. David Henderson**  
Senior Medical Director Integrated Palliative Care NSHA  
Medical Director Colchester East Hants Palliative Care Service

**Lisa Weatherbee**  
BN RN CHPCN©  
Pallium Master Facilitator/Coach

**Dr. Jitin Sondhi, MD, CCFP (PC), FCFP**  
Regional Clinical Co-Lead, Palliative Care, OH West Adult and Pediatric Palliative Care

**Kristina Anton, BScN, ACP**  
Paramedic Specialist, BC Emergency Health Services

**Karen O'Brien**  
Frontline paramedic since 1999, with a side of community paramedicine.  
SWORBHP Associate Instructor  
Pallium Facilitator

**Alana Corkery**  
EMBA, Account Manager at Pallium Canada

# Welcome and Reminders

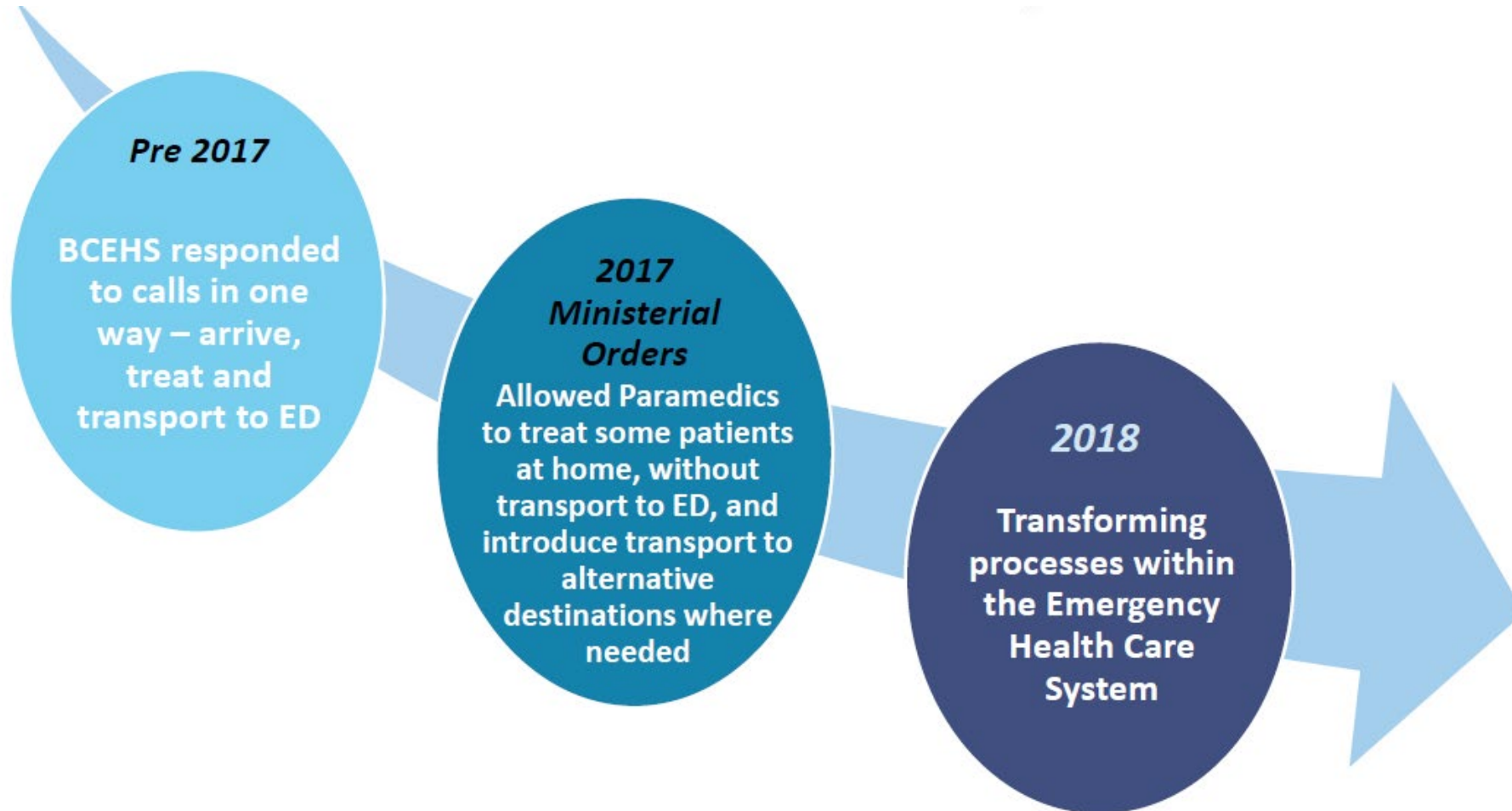
- Please introduce yourself in the chat!
- Your microphones are muted. There will be time during this session when you can unmute yourself for questions and discussion.
- You are welcome to use the chat function at any time to ask questions and add comments
- Remember not to disclose any Personal Health Information (PHI) during the session
- This session is being recorded and will be emailed to registrants within the next week

# Session Learning Objectives

**Upon completing the session, participants will be able to:**

- Have a greater understanding of the challenges faced over a large geographical area.
- Aim to have more confidence in starting those conversation with wider health authorities.
- Leave with ideas on integration for their respective services.

# Initially, there was no collaboration....





Support Goals of Care



Activate Treat and Refer



Improved Paramedic Comfort, Confidence & Knowledge



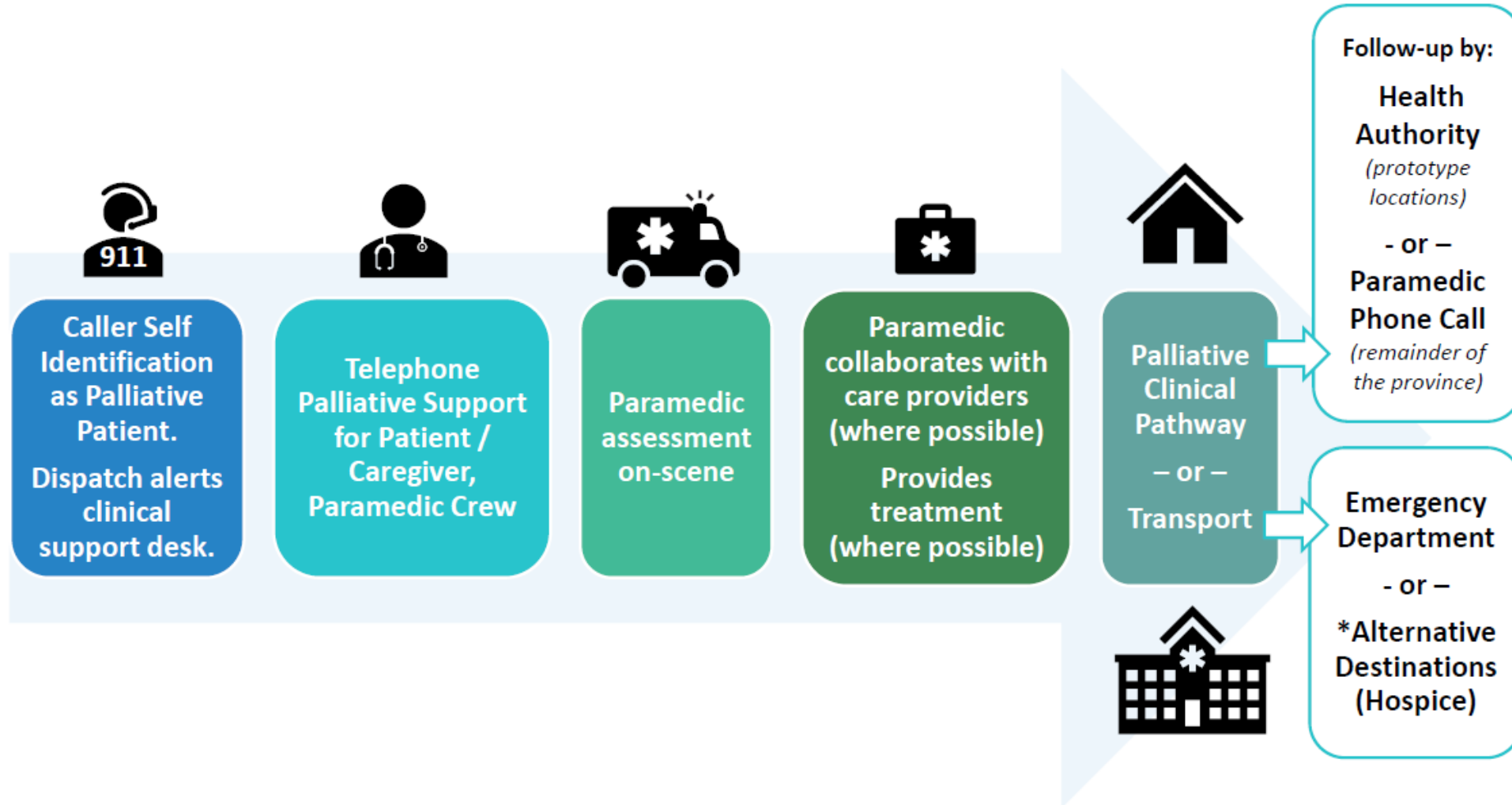
Support Rural, Remote & Indigenous Communities





# Paramedic ASTaR Palliative Clinical Pathway Process

Introduced March 2020



# What we saw from patients:

90%

patients and families were **satisfied with care**

95%

paramedics had **good knowledge** of palliative care

*“ The paramedic contacted the Fraser Health palliative team. Was not expecting this service. Thank you! ~ Patient Survey respondent ”*

*“ More support in helping family understand the legal paperwork is in place for them to stay at home, and the family not to override those wishes. ~ Paramedic Survey respondent ”*

*“ I was so happy that I did not have to go to the hospital... If I had known that I would not have to, I would have called earlier not 3am. ~ Patient Survey respondent ”*

2012 paramedics **trained**

84% paramedics feel **more knowledgeable** about palliative care

Paramedic culture is **shifting** away from transporting all patients to the ED, and it is only at the **beginning**



*“Other agencies/teams often not supportive of non conveyance”*

*~ Paramedic Survey respondent*

# Case based discussion

# CASE- LORETTE



## **Details:**

- 50 year old female
- Known metastatic lung cancer
- No more Chemo offered/SOB/ Scared

## **Social situation:**

- 5 children ( ages: 26, 22, 13, 11, 2)
  - Lives in apartment alone with 3 younger children
  - Parents and siblings live in the same community
- 
- **Where do you start?**
  - **What are the challenges you currently face?**
  - **What can we strive to do differently?**

Have you encountered similar situations in your community?

What do you think worked well?

Do you have other suggestions?

# Session Wrap-Up

- Please fill out our feedback survey! A link has been added to the chat.
- Help us spread the word! A copy of our flyer for this COP has also been added to the chat.
- Join us for our next session on December 2<sup>nd</sup> from 12-1pm ET.

# Thank You



**Stay Connected**  
**[www.echopalliative.com](http://www.echopalliative.com)**